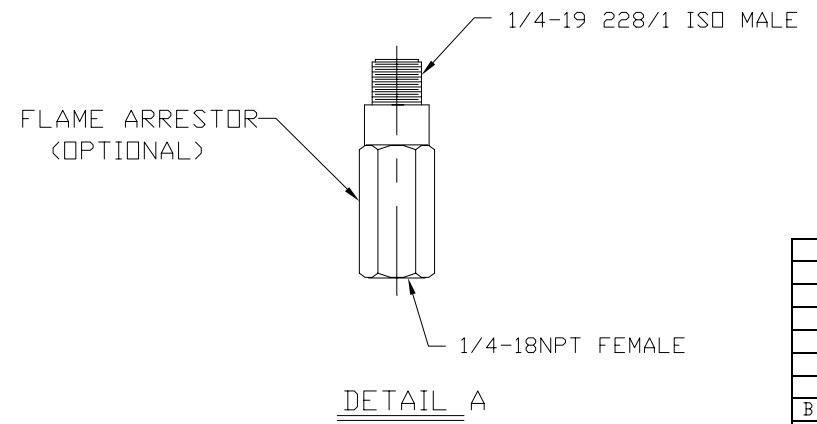
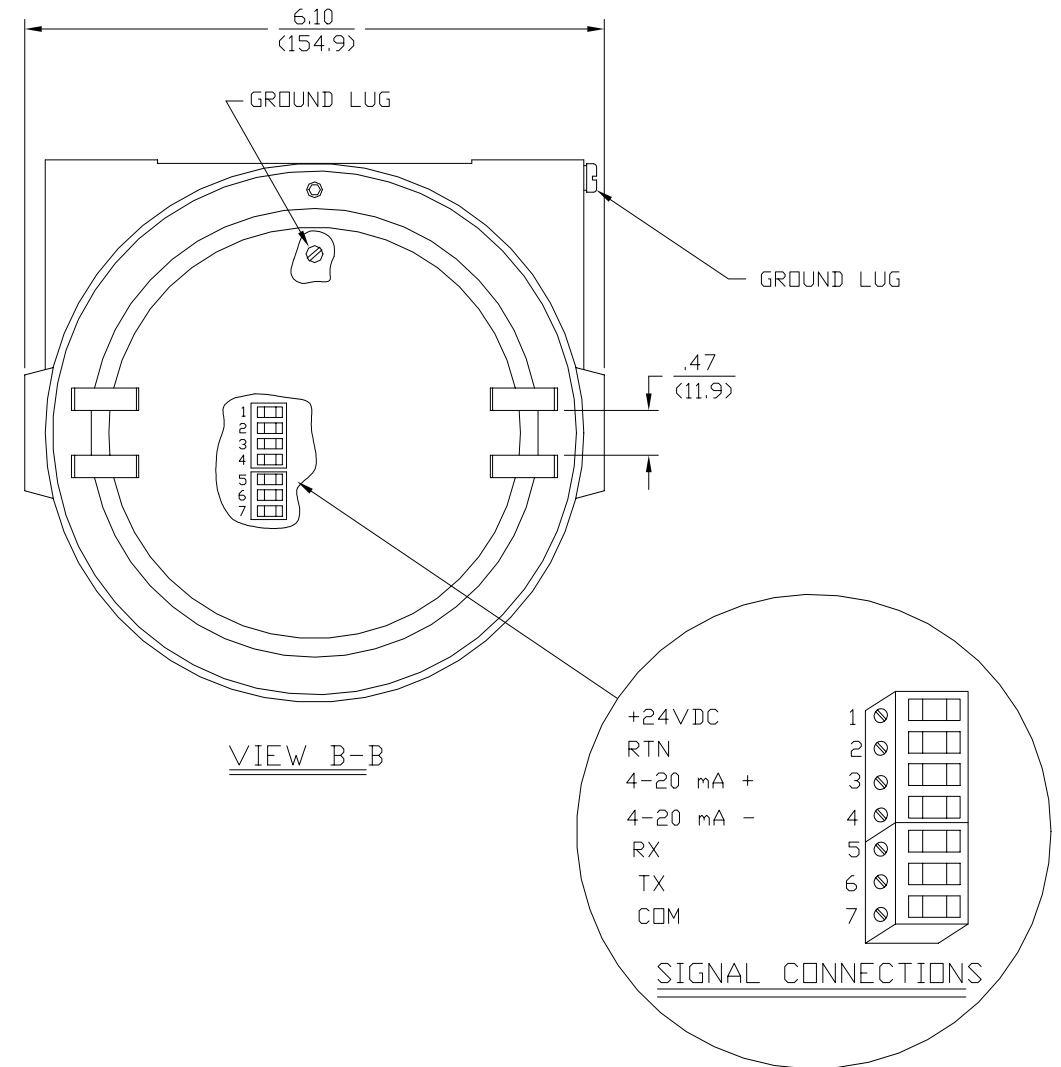
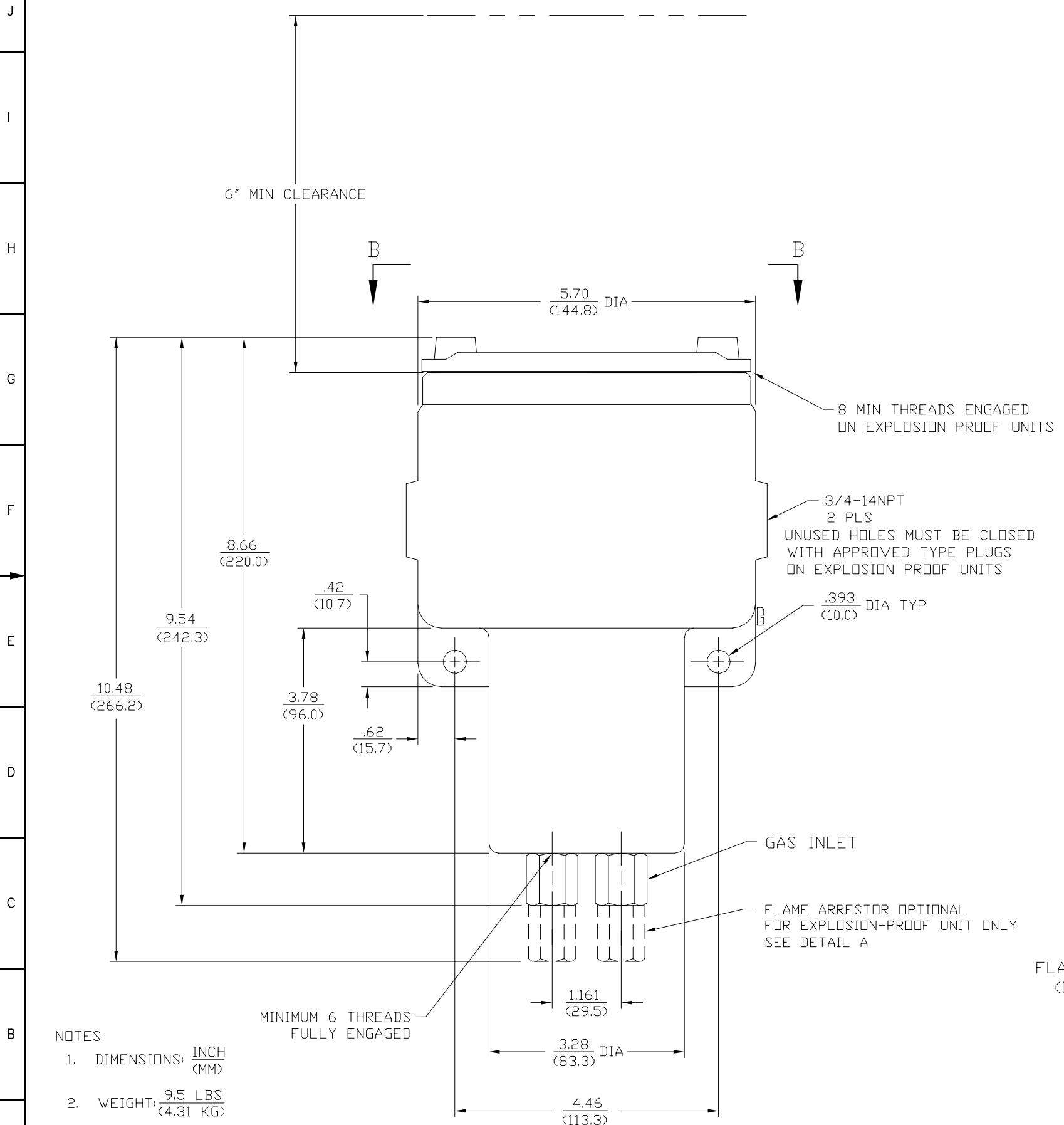


16 15 14 13 12 11 10 9 8 7 6 5 4 3 2 1

REVISIONS					
REV	ECO	DESCRIPTIONS	DWN	CKD	APVD
A	#	RELEASED TO ECO CONTROL	EJM 6/25/02	JG 7/2/02	AWP 7/8/02
B	04526	UPDATED PER ECO	HRP 8/27/02		



CHANGES TO THIS DRAWING MAY REQUIRE PRIOR APPROVAL FROM THE FOLLOWING AGENCIES: ISSEP, FACTORY MUTUAL, AND CSA. REFER TO CERTIFICATION DRAWING 752-107

- NOTES:
1. DIMENSIONS: INCH (MM)
 2. WEIGHT: 9.5 LBS (4.31 KG)
 3. ALL DIMENSIONS ARE REF

UNLESS OTHERWISE SPECIFIED DIMENSIONS ARE IN INCHES TOLERANCES ARE		PANAMETRICS WALTHAM, MASS. 02154-3497	
FRACTIONS	DECIMALS	ANGLES	TITLE
$\pm .001$	$\pm .005$	$\pm .001$	OUTLINE & INSTALLATION
			THERMAL CONDUCTIVITY GAS
			ANALYZER (SEALED REF)
DRAWN	9/25/97	ENGINEER	SIZE
EJM	9/25/97	AWP	D
CHECKED	JG	8/26/02	DRAWING NUMBER
B	04526	RN	4324
A	#	MODEL NO.	XMTC
REV	ECO	SCALE	FULL
		DO NOT SCALE DWG	SHEET 1 OF 1

16 15 14 13 12 11 10 9 8 7 6 5 4 3 2 1