



System 1*

Machinery Condition Monitoring

System 1* Basic

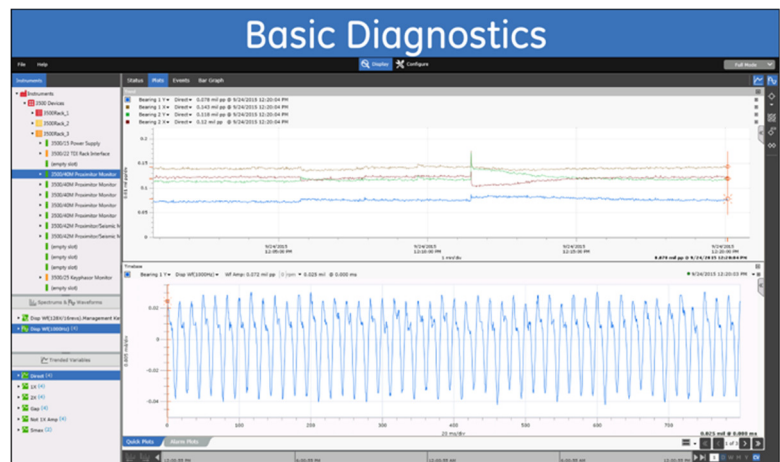
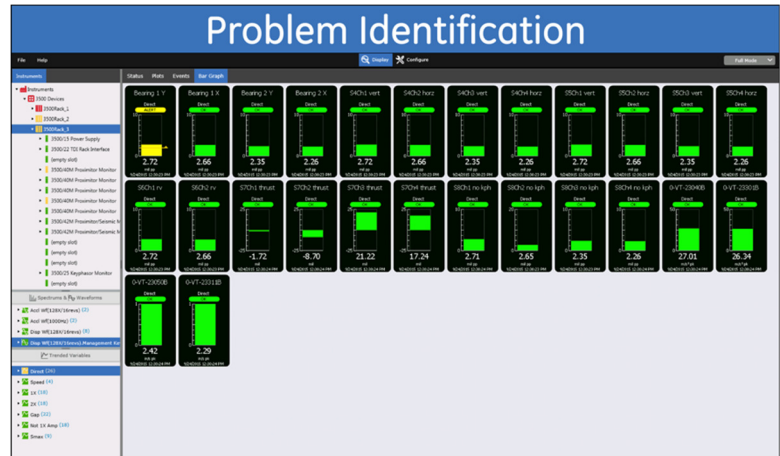
System 1* Basic is GE Bently Nevada’s entry level software product within the System 1 software suite. It provides a simple view of vibration and monitoring data that enables you to make informed decisions and avoid costly, unplanned downtime.

System 1 Basic comes equipped with a toolset to enable basic monitoring of your 3500 and ADAPT protection systems. This includes:

- ✓ Short-term trended data to allow immediate access to machine condition information
- ✓ Alarm and Event lists to understand the events being identified by the protection system
- ✓ Basic plotting tools to view data around events, historical data, and current values
- ✓ Intuitive, instrument-based navigation model

A comprehensive System 1 Software capability comparison is provided on Page 2

Since the System 1 software suite is built upon a shared platform, easily progress to the **System 1 Premium Package** as your Condition Monitoring program advances. The consistent user interface will allow you to leverage your experience, while utilizing a complete condition monitoring feature set.



System 1 Basic Ordering Information

System 1 Basic provides flexible ordering options based on the number of displays required.



3071/90 – AA System 1 Basic Display

AA: Quantity of Displays
– Numeric Entry [1→n]

Supported Devices

3500 Series



/22, /25, /32, /33, /40, /42, /44, /45, /50, /60, /61, /64, /65

Standard & M series monitors

ADAPT Series



/40, /44, /46

System Specifications

Workstation

4 Core Intel Xeon™ E5-1603 (2.8 GHz Processor)

16 GB RAM or above

1 GB Graphics Card

500 GB– 7200 RPM SATA NCQ Hard Drive [with one NTFS partition]

DVD-RW

Supported Operating Systems

Microsoft Windows 2012 Server Standard Edition 64 bit

Microsoft Windows 2012 Server R2 Standard Edition 64 bit

Microsoft Windows 2008 Server R2 Standard Edition 64 bit

Microsoft Windows 7 Professional 64 bit

Microsoft Windows 8.1 Professional 64 bit

Microsoft Windows 10 Professional 64 bit

**Recommended for Client*



System 1 Software Capability Comparison

Capability	Basic	Fundamental	Advanced	Advanced+	Premium	Premium+
Devices						
3500	✓				✓	✓
<i>Details</i>	Up to 5	-	-	-	Up to 30	Up to 30
TDI Secure	✓				✓	✓
<i>Details</i>	Up to 5	-	-	-	Up to 30	Up to 30
ADAPT	✓				✓	✓
<i>Details</i>	Up to 5	-	-	-	Up to 20	Up to 20
vbOnline Pro			✓	✓	✓	✓
<i>Details</i>	-	-	Up to 200	Up to 200	Up to 200	Up to 200
2300			✓	✓	✓	✓
<i>Details</i>	-	-	Up to 450	Up to 450	Up to 450	Up to 450
OPC Import			✓	✓	✓	✓
<i>Details</i>	-	-	6000 tags	6000 tags	6000 tags	6000 tags
Portable Devices		✓		✓		✓
Data Storage						
Trend Data (High Res)			✓	✓	✓	✓
<i>Details</i>	-	-	30 Days @ 30 sec	30 Days @ 30 sec	30 Days @ 1 sec	30 Days @ 1 sec
Trend Data (Summary)	✓	✓	✓	✓	✓	✓
<i>Details</i>	30 Days @ 10 sec	5 Years	5 Years @ 5 min	5 Years @ 5 min	5 Years @ 5 min	5 Years @ 5 min
Alarm Data			✓	✓	✓	✓
SU/SD Data					✓	✓
Condition Monitoring						
Asset Models		✓	✓	✓	✓	✓
Software Alarming		✓	✓	✓	✓	✓
State-Based Alarming			✓	✓	✓	✓
Diagram View		✓	✓	✓	✓	✓
List View		✓	✓	✓	✓	✓
Alarm & Event List	✓	✓	✓	✓	✓	✓
Notes		✓	✓	✓	✓	✓
Diagnostic Reporting		✓	✓	✓	✓	✓
Plots						
Multi-Unit Trend	✓	✓	✓	✓	✓	✓
Spectrum		✓	✓	✓	✓	✓
3D-Waterfall		✓	✓	✓	✓	✓
Waveform	✓	✓	✓	✓	✓	✓
Orbit		✓	✓		✓	✓
Bar Graph	✓		✓	✓	✓	✓
Bode		✓	✓	✓	✓	✓
Polar					✓	✓
3D-Cascade					✓	✓
Shaft Centerline					✓	✓
General						
Security Profiles		✓	✓	✓	✓	✓
Internationalization		✓	✓	✓	✓	✓
EI Connectivity		✓	✓	✓	✓	✓

© 2014-2017 Bently Nevada, Inc. All rights reserved.

* Denotes a trademark of Bently Nevada, Inc., a wholly owned subsidiary of General Electric Company.

Core™ and Xeon™ are trademarks of Intel Corporation.

Microsoft, Windows, and Windows Server are trademarks of Microsoft Corporation in the United States and other countries.

The information contained in this document is subject to change without prior notice.

Printed in USA. Uncontrolled when transmitted electronically.

1631 Bently Parkway South, Minden, Nevada USA 89423

Phone: 775.782.3611 Fax: 775.215.2873

www.GEmeasurement.com