

GE Measurement & Control

Intecal v10

Calibration Management Software



GE's Calibration Solution

Calibration is an important part of the maintenance of process instrumentation. Ensuring process plant instrumentation is calibrated correctly and up to date reduces waste, improves quality, ensures safety and prevents noncompliance of key regulations.

In this fast changing industrial environment, companies need to improve constantly their operations and deliver more efficient results without jeopardizing quality. The calibration process is no exception. Companies should ensure they are improving the productivity of their maintenance and calibration year after year. However, managing 1000s of plant instruments and then tracking and managing the data is not an easy task. Modern calibrators, such as those in GE's Druck range, can produce vast amounts of important data. This is where Calibration Management Software comes into its own. The right calibration software simplifies the whole calibration process while continuing to make it more efficient and accurate.

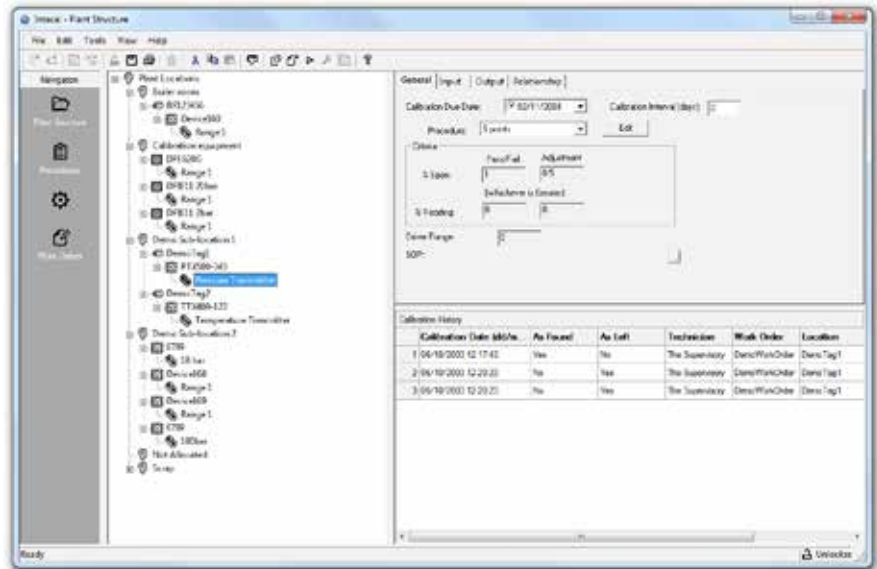
GE's Druck range has been a world leader in calibration instruments for over 40 years offering a wide-range of high precision pressure, temperature and electrical calibrators and pressure controllers to maintain and calibrate the high accuracy and smart instrumentation used in today's process industry. Now with the launch of Intecal v10, GE offers a powerful yet easy to use and cost effective calibration management system. Optimised to work with all GE's Druck range of calibrators, it forms the heart of an effective and simple calibration system to maximise the productivity of any calibration process.

Calibration management. Made simple.

The Customer Profile

Intecal v10 is an optimal solution for small, medium and large process plants looking for a cost-effective system to automate and digitalize their calibration processes. Simple yet powerful, this calibration management software allows customers to enhance their productivity by delivering savings in production costs and time. This Intecal v10 customers are audit-ready to reduce the burden of compliance (e.g. ISO 9000).

For information on the full range of GE's Druck test & calibration products, visit our website at www.gemeasurement.com

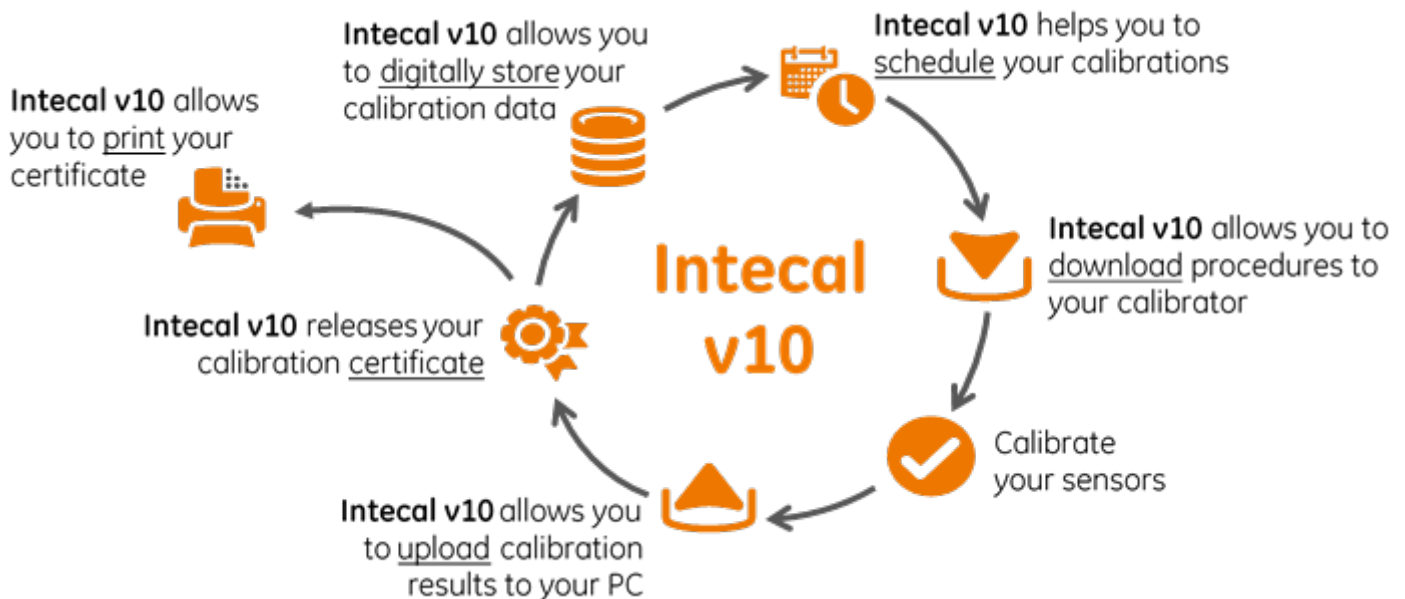


The Calibration Process

Intecal v10 ensures you get the best from your daily calibration routine. Save time and minimize costs thanks to a completely paper-free process. Plan work schedules, download the procedures, calibrate, get the certificate, and store it for the next audit!

The Key Industries

- Food & Beverage plants
- Oil, gas and petrochemical plants and refineries
- Pharmaceutical and life sciences plants
- Power plants
- Calibration companies
- General processing industries





Calibration management. Made simple.



Easy to
Use



Automated
Scheduling



Certificate
Generation



Users
Management

What is Intecal v10?

Intecal v10 is the new calibration management software developed to maintain and control a calibration environment to the highest standards of metrology. Intecal v10 software has been adapted for both the calibration laboratory and the process industry, especially where digital pressure calibrators or portable calibrators are used to calibrate and validate electrical, pressure and temperature instrumentation. Intecal v10 replaces all its previous releases.

What you need to know

1. You can have a **30-days free trial** of Intecal v10 now! Visit our website to download your 30-days free trial version: www.gemeasurement.com
2. Available in: English, Chinese, Spanish, French, German, Italian, Japanese, Polish, Portuguese, Russian, Dutch and Swedish
3. Minimum requirements: Windows XP, 7 and 8, 32 or 64 bit OS.

The Key Features

- A powerful, easy to use and yet cost-effective calibration software for process plants.
- Fully compatible with following GE's Druck calibrators:
 - Portable calibrators DPI 620 Genii, DPI 612 and DPI 611
 - Temperature calibrators dry block and liquid bath
 - Pressure controllers PACE 1000 and PACE 5000/6000;
 - Earlier products DPI 620, DPI 605, DPI 610/615, DPI 320/325, DPI 330/335, DPI 150, MCX II, TRX II, DBC 150, and DBC 650.
- Digitally store your calibration certificates to reduce burden of compliance (e.g. ISO 9000, environment standards).
- Fully automated scheduling tool to plan routine calibrations and outage maintenance.
- Fully automated & paperless calibration process saving time and minimizing production costs.
- Fully supports third party calibrators with FCINTF protocol.

The Key Benefits

Easiness to use

- Hands free in-field or test bench calibrations
- Paperless and fully automated calibration management process

Productivity

- PASS or FAIL indication with device accuracy
- Re-schedules the next calibration

Compliance

- Auditable records and device history
- Generates a calibration certificate

GE's Druck Test & Calibration Range.

A solution for every need.

GE's Druck Test & Calibration

Temperature Calibrators



Pressure Controllers



Portable Calibrators



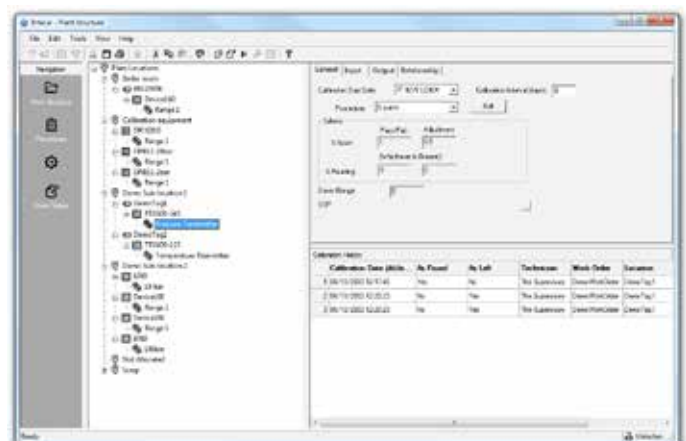
Automated connection

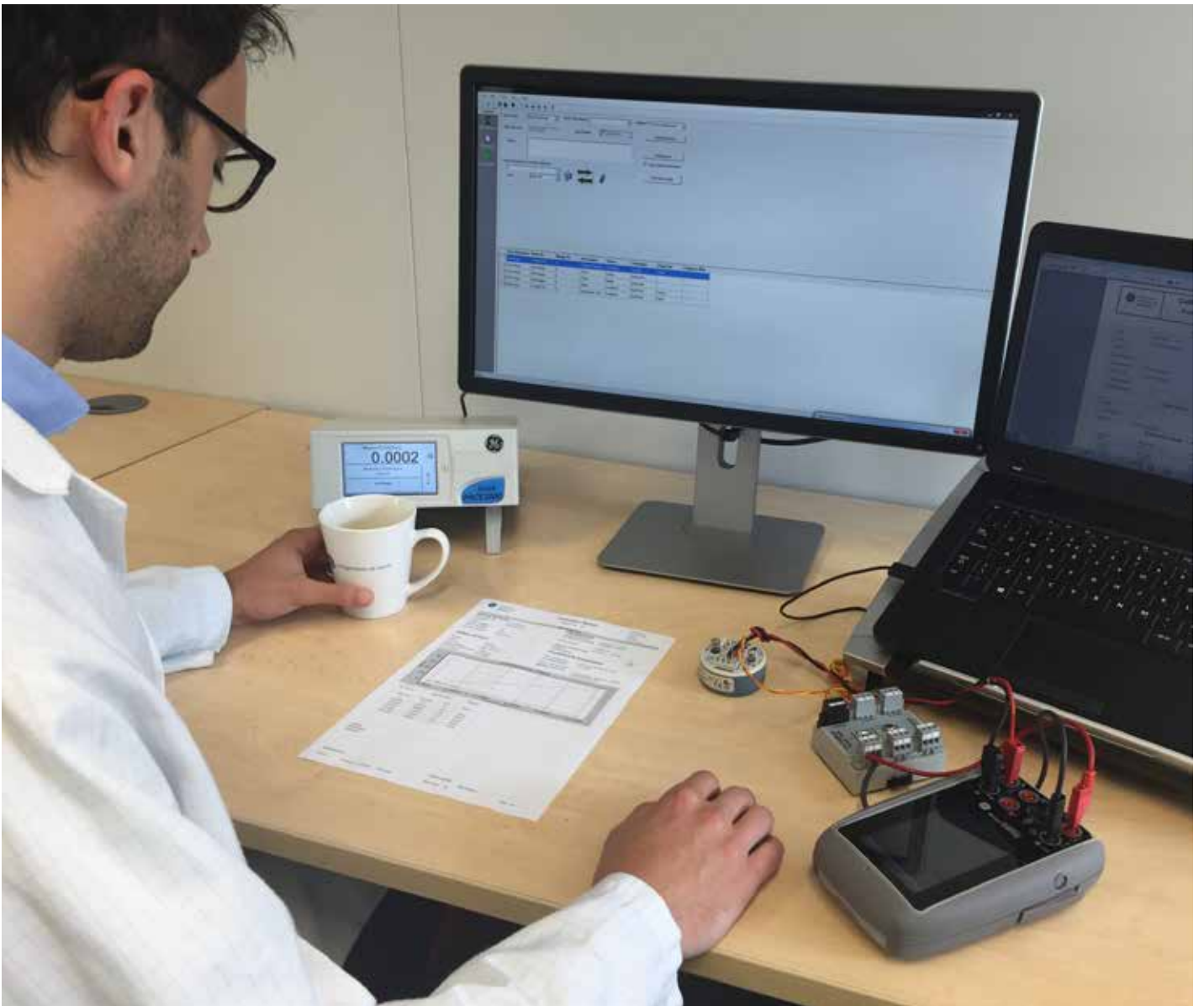
Manual entry

Intecal v10

Calibration Management Software

For more information visit our website
www.gemeasurement.com





www.gemeasurement.com

Measurement & Control is a leading innovator in advanced, sensor-based measurement; non-destructive testing and inspection; flow and process control; turbine, generator, and plant controls; and condition monitoring.

Providing healthcare for our customers' most critical assets, we deliver accuracy, productivity and safety to a wide range of industries, including oil & gas, power generation, aerospace, metals and transportation. Headquartered in Boston, USA, Measurement & Control has more than 40 facilities in 25 countries and is part of GE Oil & Gas.



Imagination at work

© 2015 General Electric Company. All Rights Reserved.

Specifications are subject to change without notice. GE is a registered trademark of General Electric Company. Other company or product names mentioned in this document may be trademarks or registered trademarks of their respective companies, which are not affiliated with GE.