



3500/94M Display from GE's Digital Solutions

As the Local Window into the Machine, walk around operators, reliability engineers and control room operators need a local display that delivers real-time values and current machine status at the machine and in the control room.

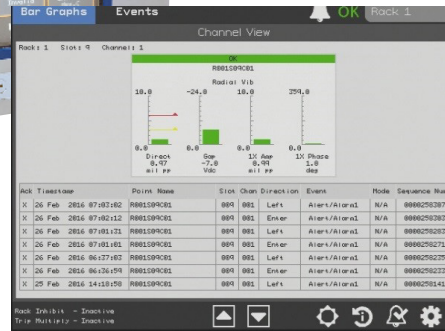
The 3500/94M provides a real-time window into the machine health and instrumentation condition.

GE's Bently Nevada 3500/94M consolidates the features and functions of the 3500/93 and 3500/94 into a single display.

In addition, it securely and safely delivers critical machine information to the skid and the control room.

Key Features

- Consolidation of 3500/93 and 3500/94 to new 3500/94M
- Architecture of 3500/94 is preserved in the 3500/94M
- Color touch screen (VGA & Serial interface)
- KVM extender to support remote installations
- Router Box to support up to 4 racks in one display
- Panel, 19-inch EIA Rack, Independent Housing & Face mount (10" only) options
- Remote Installation support up to 1000 ft. from the rack
- 2 size options to fit current /93 and /94 display footprints
- CSA Class 1 Zone 2/Div 2 & ATEX/IECEX Zone 2
- In addition to the basic values and machine statuses in the 3500/94M, System 1 offers additional detailed machine analysis and diagnostics



GE Oil & Gas
 3300 North Sam Houston Parkway East
 Houston, TX 77032
 24/7 customer support: +1 281 449 2000
 geoilandgas.com

© 2017 General Electric Company. All rights reserved.
 GEA33276 (06/2017)