

# FieldMonitor™ Configuration Software for RSLogix5™

Bently Nevada™ Asset Condition Monitoring

---

## Description

The FieldMonitor™ Configuration Software for RSLogix5™ is a software package we developed to configure the FieldMonitor system and view data from the FieldMonitor system **only** when using an Allen-Bradley (A-B) PLC-5™ controller with RSLogix5 Configuration Software. RSLogix5 software is the Rockwell Automation software used to configure a PLC-5 controller. The FieldMonitor Configuration Software for RSLogix5 can be used where the industrial network between the PLC-5 and the FieldMonitor is either ControlNet or A-B Remote I/O.

When using FieldMonitor Configuration Software for RSLogix5, FieldMonitor configuration options are selected by clicking in the desired boxes or typing in a value from a windows-based screen within RSLogix5. See example configuration screen capture.

Two software options are available for use with the FieldMonitor System and RSLogix5:

User package - used by end-users to configure their own FieldMonitor Systems.

Integrator package - used by system integrators to configure the FieldMonitor Systems for their customers.

**Note:** This software can only be used with PLC-5 controllers and RSLogix5 software. FieldMonitor can be used with many other controllers. For more information on the data structures to integrate FieldMonitor with these products contact your local sales or service professional.

---

## Specifications

### Computer Requirements

- Pentium, Pentium-compatible, or 486 microprocessor
- 32 MB or more of RAM
- SVGA color monitor
- 2 MB of unused hard disk space
- 3.5" 1.44 MB floppy disk drive (for installation)
- Microsoft Windows 95 or NT 4.0, or later operating systems

The following Rockwell Software Inc. products must be installed on the computer before you install the 1701 software: RSLogix, RSLinx, and RSNetwork for

---

## Ordering Information

### FieldMonitor Configuration Software for RSLogix5 \* 1701/01-XX

#### Option Descriptions

**Note:** \* 1701/01-01 and -02 options include 1701/20-01 one-year single package support agreement.

- 01 User Package
- 02 Integrator Package

---

### Technical Support Agreements

#### 1701/20-XX

#### Option Descriptions

- 01 1-year single package technical support agreement
- 02 1-year multiple package technical support agreement
- 03 2-year single package technical support agreement
- 04 2-year multiple package technical support agreement
- 05 3-year single package technical support agreement
- 06 3-year multiple package technical support agreement
- 07 4-year single package technical support agreement
- 08 4-year multiple package technical support agreement
- 09 5-year single package technical support agreement
- 10 5-year multiple package technical agreement

## Screen Capture

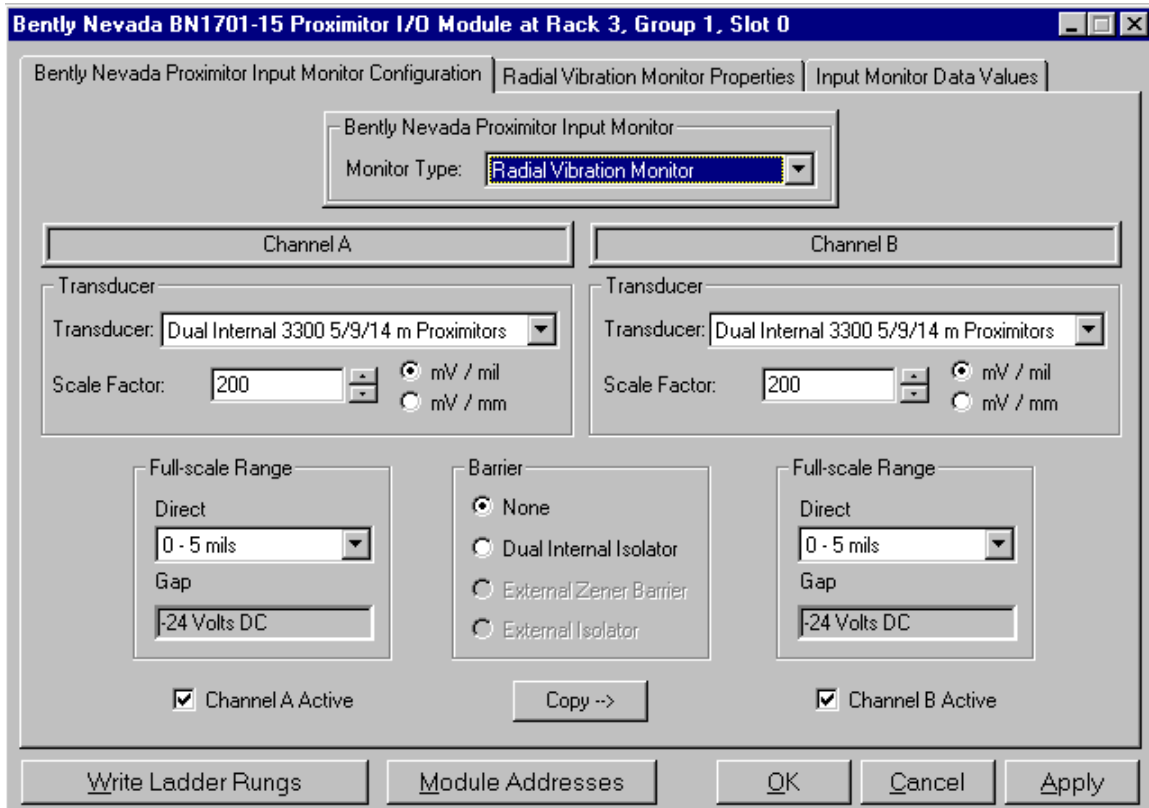


Figure 1: Sample Configuration Screen

Bently Nevada and FieldMonitor are trademarks of General Electric Company.  
RSLogix5 is a trademark of Rockwell Automation.

Copyright 2000. Bently Nevada LLC.  
1631 Bently Parkway South, Minden, Nevada USA 89423  
Phone: 775.782.3611 Fax: 775.215.2873  
[www.ge-energy.com/bently](http://www.ge-energy.com/bently)  
All rights reserved.