

# FieldMonitor\* Configuration Software for RSLogix 5000™

Bently Nevada\* Asset Condition Monitoring

---

## Description

The FieldMonitor\* Configuration Software for RSLogix 5000™ is a software package that is used to configure the FieldMonitor system **only** when using an Allen-Bradley (A-B) ControlLogix™ controller with RSLogix 5000 and RSNetWorx™ for ControlNet™ Software. RSLogix 5000 software is the Rockwell Automation software used to program and configure a ControlLogix controller and RSNetWorx for ControlNet is software used to configure and map a ControlNet network. The FieldMonitor Configuration Software for RSLogix 5000 can be used only when the industrial network is ControlNet.

When using FieldMonitor Configuration Software for RSLogix 5000, the EDS (Electronic Data Sheet) files must first be installed in RSNetWorx for ControlNet. FieldMonitor configuration options are selected from within RSLogix 5000 by adding FieldMonitor modules in the I/O Configuration beneath an A-B 1794 ControlNet adapter. See the sample configuration screen capture at the end of this data sheet.

Several software options are available with the software:

User package - used by customers to configure their own FieldMonitor Systems.

OEM package - used by system integrators to configure the FieldMonitor Systems for their customers.

**Note:** This software can only be used with ControlLogix controllers and RSLogix 5000 software. FieldMonitor can be used with many other controllers. For more information on the data structures to integrate FieldMonitor with these products contact your local sales or service professional.

---

## Specifications

Most computer requirements are dependent on the RSLogix 5000 version installed. Contact Rockwell Automation, Inc for your system requirements.

### Minimum Computer Requirements

3 MB of unused hard disk space for program storage of the FieldMonitor configuration profile.

CD-ROM drive (for installation from CD).

The following Rockwell Automation, Inc products must be installed on the computer before you install the FieldMonitor Configuration Software: RSLogix 5000, RSLinx, and RSNetWorx for ControlNet.

---

## Ordering Information

FieldMonitor Configuration Software for RSLogix 5000  
1701/02-AXX

### A: Software packages

- 01** Single User Package with 1-year TSA
- 02** One Site OEM with 1-year TSA
- 11** One Site OEM with 5-year TSA
- 51** Software Update

**Note:** Option 1701/02-01 includes 1701/20-01 1-year single user technical support agreement (TSA). Option 1701/02-02 includes a 1-year OEM technical support agreement (TSA). Option 1701/02-11 includes a 5-year OEM technical support agreement (TSA).

---

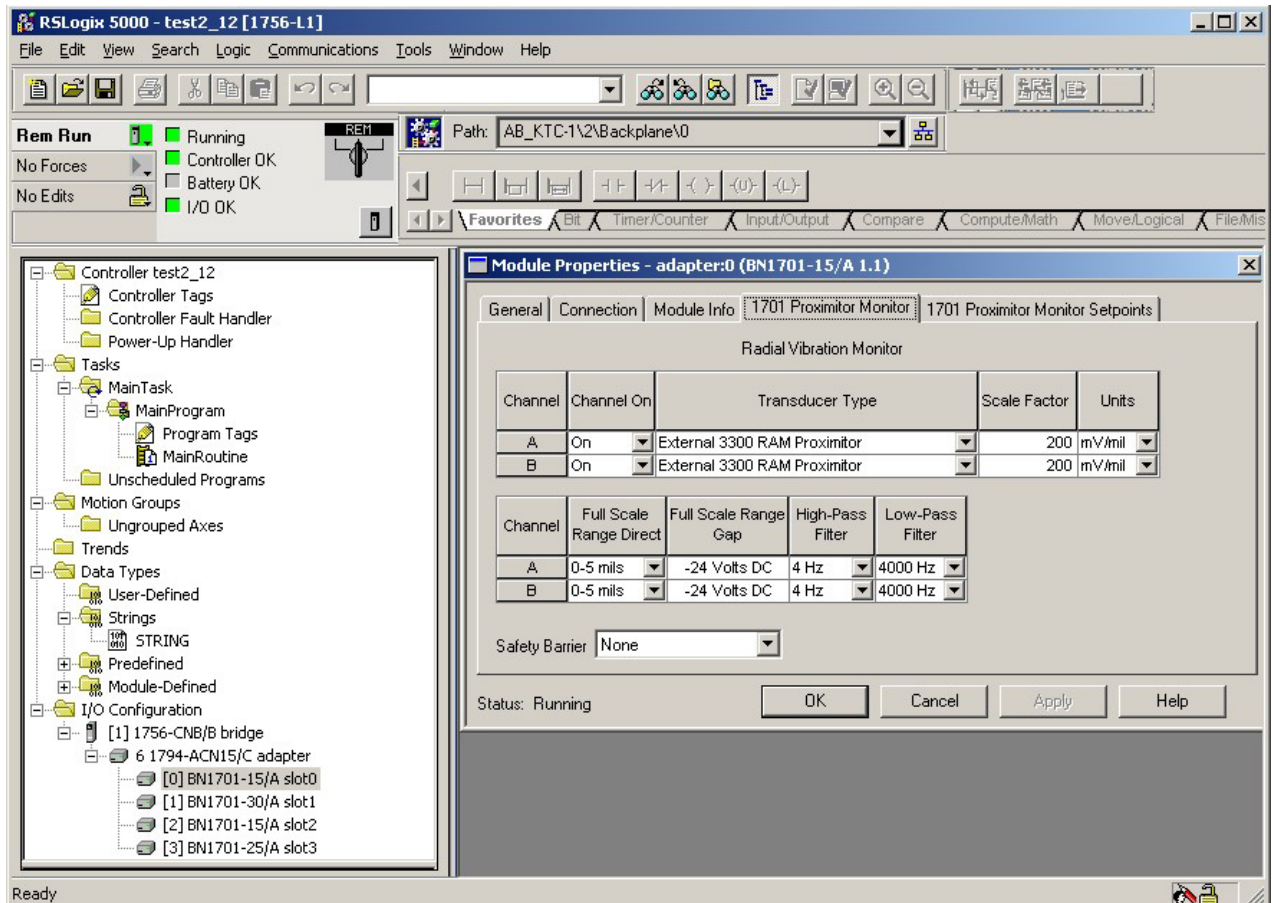
## Technical Support Agreements

### 1701/20-AXX

#### A: Support Agreements

- 01** Single User Package, 1-Year Support
- 02** One Site OEM Package, 1-Year Support
- 09** Single User Package, 5-Year Support
- 10** One Site OEM Package, 5-Year Support

# Screen Capture



**Figure 1: 1701/02 Sample Configuration Screen**

\* Denotes a trademark of Bently Nevada, Inc., a wholly owned subsidiary of General Electric Company.

RSLogix 5000, ControlLogix, and RSNetWorx are trademarks of Rockwell Automation, Inc.

ControlNet is a trademark of ControlNet International, Ltd.

© 2001 – 2010 Bently Nevada, Inc. All rights reserved.

Printed in USA. Uncontrolled when transmitted electronically.

1631 Bently Parkway South, Minden, Nevada USA 89423

Phone: 775.782.3611 Fax: 775.215.2873

[www.ge-energy.com/bently](http://www.ge-energy.com/bently)