



## Measurement & Sensing

# OEM Solutions for Pressure Sensing

### Technical Experience

Pressure is a vital parameter in millions of industrial processes and applications. At GE, we understand having extremely accurate and stable pressure data is crucial in order to keep your factory, power plant, manufacturing process or machine working efficiently and safely.

With a long history of working with Oil & Gas, Aerospace, Automotive and many other industries, we know what matters when developing pressure sensor solutions for OEM and test applications, and we build this expertise into every product we make.

### Production Excellence

Our pressure solutions are manufactured in the UK, Norway and China to enable us to get closer to our customers. Each facility is ISO9001 accredited and AS9100 for our aerospace business and operates under GE's strict quality-control procedures. We have continually invested in advanced manufacturing techniques and processes that have resulted in significant improvements to our product-quality and efficiency.

All factories in the UK and China are supported by GE's Supply-chain. Planning teams work with OEM customers building forecasts to offer reliable deliveries.

For more information please contact your local GE representative, or visit <https://www.gemeasurement.com/sensors-probes-transducers>

### Design for variation

Since 2009 we have designed new platforms using common component parts to allow interchangeability. This allows customisation while maintaining short turn around time to design and build bespoke configurations. Our engineering teams continue to develop new platforms and solutions to meet the changing demands of applications from Aerospace to Motorsport and Oil & Gas to Semiconductors.

### Silicon Technology

The heart of all our pressure-sensing solutions is the sensing element which is manufactured from silicon wafers in our state-of-the-art clean room facility in Leicester, UK. Because we process the raw silicon right through to the final product, we have developed a World-class expertise in producing high-performance, high stability, fast-responding and high-quality pressure sensors. Silicon pressure sensors offer the following:

- Long operational life
- Long term Stability
- High Signal to noise ratio
- Fully welded media isolated construction

### Engineering Support

A team of engineers are readily available to support with the following:

- Advise the best solution
- Develop bespoke solutions by modifying Hardware, electronics and software
- Badge products
- After sales advice and investigations

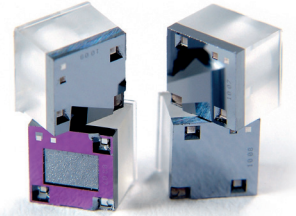
### Global Reach and Local Support

Our highly trained local teams are available to support customers in country and are supported by a network of specialists and application engineers. Who, in turn, are supported by our Centre of Excellence team in Leicester, UK.



# Platforms for solutions

The following platforms can be used directly or as the basis of a custom solution.



## TERPS

With no imperfections, Trench Etched Resonant Pressure Sensors (TERPS) use new silicon sensing technology to give the highest performance available from a pressure sensor. Designed for applications where ultimate accuracy and stability are required in a robust industrial package

- 25mm package
- 0.01% performance



## UNIK5000

High Performance industrial grade product. Designed to meet the needs of multiple markets on a short lead-time

- 25mm package
- 0.04% performance
- Hazardous area certified
- Welded Stainless Steel construction



## DPS5000

High Performance Digitally compensated product with a Digital output

- 25mm package
- 0.1% Performance over wide temperature
- I2C output for minimum power



## 1800 series

High performance level sensor designed to give long service in harsh submerged application

- 17.5 mm package
- 0.06% performance
- Titanium construction



## UNIK56-5700

Marine certified product

- 25mm Package
- Stainless or Titanium construction
- Fully submersible options



## UNIK58-5900

High Performance Explosion proof (Flameproof) certified products

- Stainless Steel Package
- IECEx ATEX FM certifications



## RTX1000

Process Pressure Transmitter with 4-20 mA HART output

- Suite of Process options
- Pressure ranges to 1400 bar



## 4300 Series

High Performance Motorsport

- 17.5mm package
- Stainless or Titanium construction
- Max operating temp to 175 °C



## 4400 Series

High Performance Motorsport

- 12.5 mm package
- Stainless Steel construction
- Max operating temp to 175 °C



## Modules

Multiple module platforms

- 12 mm to 38 mm diameter
- 70 mbar to 1400 bar
- Stainless Steel, Titanium, Inconel, Hastelloy construction materials